

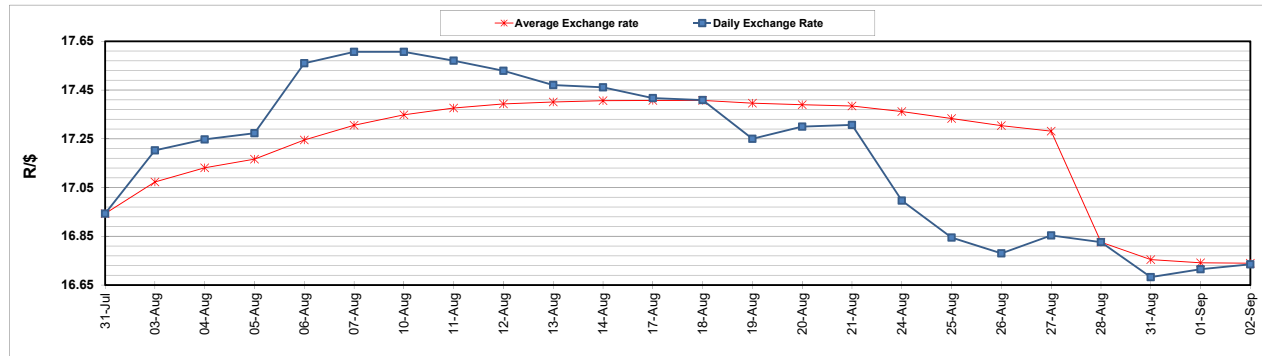
	PETROL 95 ULP	PETROL 93 ULP & LRP	DIESEL 0.05%	DIESEL 0.005%	ILL. PAR.
GAUTENG PUMP PRICE (SA c/l) AS FROM 02/09/2020	1,518.000	1,489.000	-	-	-
WHOLESALE PRICE (SA c/l) AS FROM 02/09/2020	-	-	1,327.560	1,331.960	716.828
SINGLE NATIONAL MAXIMUM RETAIL PRICE	-	-	-	-	899.000
BASIC FUEL PRICE - 02/09/2020 (SA c/l)	547.201	539.679	526.018	528.548	460.636
PRESS RELEASE CONTRIBUTION TO BFP 02/09/2020 - 02/09/2020 (SA c/l)	565.470	546.470	576.630	581.030	512.128
UNIT OVER/(UNDER) RECOVERY - 02/09/2020 (SA c/l)	18.269	6.791	50.612	52.482	51.492
AVERAGE BASIC FUEL PRICE 28/08/2020 - 02/09/2020	554.143	546.825	534.400	537.006	468.372
AVERAGE UNIT OVER/(UNDER) RECOVERY 28/08/2020 - 02/09/2020	14.552	2.870	57.980	59.774	63.256

ANALYSIS MOVEMENT OF AVERAGE OVER/(UNDER) RECOVERY

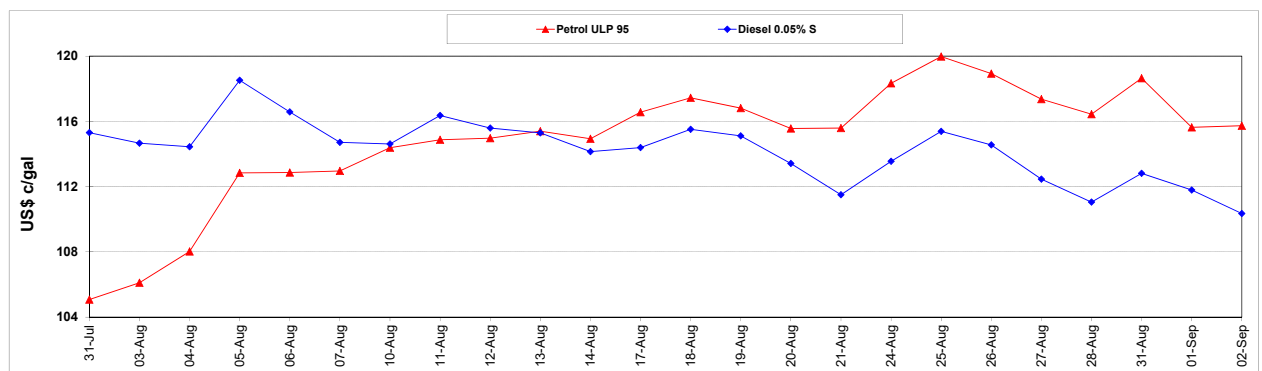
	PETROL 95	PETROL 93	DIESEL 0.05%	DIESEL 0.005%	ILL. PAR.
- MOVEMENT IN INTERNATIONAL PRODUCT PRICES	(3.384)	(14.829)	40.683	42.393	48.097
- MOVEMENT IN EXCHANGE RATE	17.936	17.699	17.297	17.381	15.159
AVERAGE UNIT OVER/(UNDER) RECOVERY 28/08/2020 - 02/09/2020	14.552	2.870	57.980	59.774	63.256

R/\$ EXCHANGE RATE - (R/\$16.7350 - 02/09/2020)

EXCHANGE RATE USED IN BASIC FUEL PRICE



INTERNATIONAL PRODUCT PRICES OF BASKET USED IN BASIC FUEL PRICE



BASIC FUEL PRICE IN SA CENTS PER LITRE

